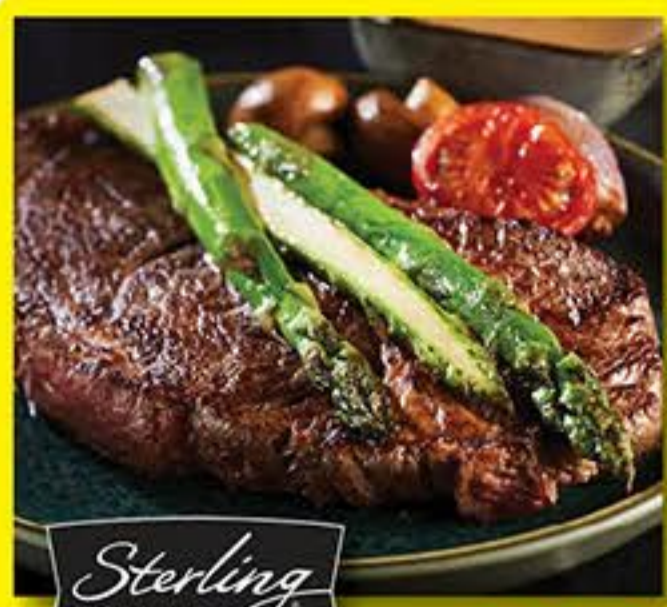




# Don Quijote

Visit us at [www.DonQuijoteHawaii.com](http://www.DonQuijoteHawaii.com)  
**SALE EFFECTIVE: Wednesday, June 10 - Tuesday, June 16, 2026**

# DON DON: DONKI



**Sterling SILVER PREMIUM MEATS**  
**BONELESS CROSSRIB ROAST** **6.99** lb.



**50th State Poultry**  
**CHICKEN THIGHS or DRUMSTICKS** **2.49** lb.  
 Family Pack.  
 Ground Chicken Breast..... **4.99/lb.**



**CHAIRMAN'S RESERVE**  
**PORK KIRIOTOSHI** **4.99** lb.  
 Mega pack.



**WILD BUTTERFISH STEAKS** **8.99** lb.  
 Frozen. Selected cuts.



**WHITE PEACHES** **3.49** lb.



**Verry CHERRY PLUM**  
**CHERRY PLUMS** **5.99** lb.

## NATIONAL DAIRY MONTH

**Daisy COTTAGE CHEESE** Selected. 16 oz. **3.59**

**Essential Everyday CHEESE** Chunk or Shredded. Selected. 6 - 8 oz. **2 for \$5**

- MEXICAN FOUR CHEESE BLEND
- LOW-MOISTURE PART-SKIM MOZZARELLA CHEESE
- MEDIUM CHEDDAR
- LOW-MOISTURE PART-SKIM MOZZARELLA CHEESE

**Yoplait YOGURT** Selected. 32 oz. **3.29**

- vanilla vanilla
- strawberry fresh
- blueberry blueberry

**Lotte COOLish ICE CREAM** Selected. 4.56 - 4.73 oz. **1.99**

**Aloha TOFU** Soft or Firm. 19 - 20 oz. **2.89**

**Daisho NABE TSUYU** Selected. 26.45 oz. **3.49**

**Myojo IPPEI-CHAN YAKISOBA** Selected. 4.77 oz. **2.49**

**Essential Everyday CHEESE** 2 for \$5

**Zippy's CHILIS or SOUPS** Selected. 20 oz. **10.99**

**Roselani TROPICS ICE CREAM** Selected. 48 oz. **12.99**

**Meadow Gold POG** 1 gal. **7.29**

**Treat Shop GLAZED DONUTS** 27 oz. **10.99**

**Yoplait YOGURT** Selected. 32 oz. **3.29**

**Van Camp's PORK AND BEANS** 15 oz. **3 for \$5**

**SPAM** Hormel SPAM Selected. 12 oz. **2 for \$6**

**Coral CHUNK LIGHT TUNA** Selected. 5 oz. **4 for \$5**

**Tamaki Gold RICE** 15 lb. **30.99**  
**Diamond G CALROSE RICE** 15 lb. **10.99**

**HORIZON ORGANIC Milk** HALF GALLON **8.99**

**Frito Lay SNACKS** Cheetos, Fritos or Funyuns. Selected. 5.25 - 10 oz. **2 for \$9**

**Pepsi SODA CUBE** Selected. 12 oz./24 pk. **8.99**

**Jinro FLAVORED SOJU** Selected. 375 ml. **4.59**  
**Jinro KOREAN SOJU** Selected. 700 - 750 ml. **8.79**  
 • 1.8 L. **15.99**

**Iwatani 4-PACK BUTANE GAS** #BU6, UL listed. Up to 2 hours use per canister. Fits standard butane stoves. **6.99**

**Essential Everyday BUTTER** Selected. 16 oz. quarters. **4.59**

Limited to 5 units unless otherwise specified. We reserve the right to correct typographical or pictorial errors in our advertisement.

Stores Hours: Honolulu 24 Hours; Pearl City 6am - Midnight; Kapolei 6am - 1am (Ad Effective: June 10th., 6am)

HONOLULU STORE (808) 973-4800 • PHARMACY (808) 973-6661 PEARL CITY (808) 453-5500 KAPOLEI (808) 909-9700



**BONELESS CHUCK**  
For sukiyaki.  
**11<sup>99</sup>** lb.



**BONE-IN BEEF SHANK**  
**6<sup>99</sup>** lb.



**CHICKEN**  
Thighs, Drumsticks, Wings, or Boneless Skinless Thighs or Breasts. Frozen. 2.5 lb. bag.  
Starting at **4<sup>99</sup>**



**PORK CUTLET or CHOPPED PORK**  
Family pack.  
**3<sup>99</sup>** lb.



**NEW!**  
Noh **HAWAIIAN STYLE TERIYAKI BEEF PATTIES**  
3 lb. **24<sup>99</sup>**



**GYUMORI**  
Beef with onion & sweet sauce. Fully cooked. 16 oz.  
**10<sup>99</sup>**



**HUNNYZ APPLES**  
2 lb. **3<sup>99</sup>**



**GOLD KIWIFRUIT**  
1 lb. **4<sup>99</sup>**



**RED or GREEN SEEDLESS GRAPES**  
**3<sup>99</sup>** lb.



**BLUEBERRIES**  
6 oz. **3<sup>99</sup>**



**CHINESE CABBAGE**  
**1<sup>49</sup>** lb.



**ASPARAGUS**  
**3<sup>99</sup>** lb.



**ATLANTIC SALMON BELLY STRIPS**  
Frozen or previously frozen. **8<sup>99</sup>** lb.



**WHOLE TILAPIA**  
Cleaned. Frozen or previously frozen. **3<sup>19</sup>** lb.



**Okuhara MARINATED ATLANTIC SALMON FILLET**  
Fresh. Selected. 14 oz. **13<sup>99</sup>**



**EZ Peel JUMBO WHITE SHRIMP**  
Frozen. (16/20) 2 lb. Bag. **16<sup>99</sup>**



**Asahi SUPER DRY BEER**  
12 oz./12 pk. cans. **14<sup>99</sup>**



**Dassai 45 JUNMAI DAIGINJO**  
720 ml. **22<sup>99</sup>**  
1.8 L. **44<sup>99</sup>**



**Robert Mondavi WOODBRIDGE WINE**  
Selected. 1.5 L. **11<sup>99</sup>**



**Heineken, Corona, Modelo or Pacifico BEER**  
Selected. 18 pk/12 oz. **26<sup>99</sup>**



**Grown in Idaho POTATOES**  
Selected. 28 oz. **6<sup>99</sup>**



**Totino's PIZZA ROLLS**  
Selected. 50 ct. **2<sup>99</sup>**



**Redondo's HAWAIIAN WINNERS or FRANKS**  
Selected. 16 oz. **3<sup>99</sup>**



**Oscar Mayer BACON**  
Selected. 12 - 16 oz. **5<sup>99</sup>**



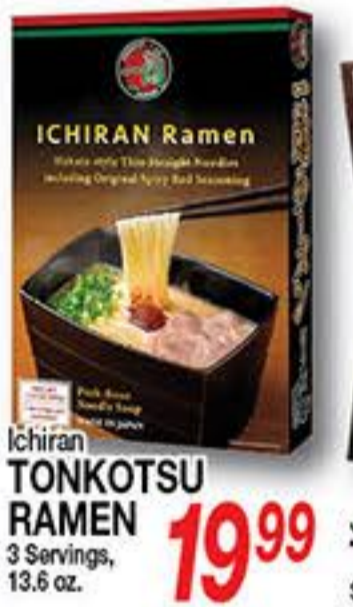
**Sun Noodle GARLIC SHRIMP FRIED NOODLE**  
15 oz. **2<sup>99</sup>**



**Koha FROZEN EDAMAME**  
14 oz. **2<sup>29</sup>**



**Osaka Ohsho GYOZA**  
Selected. 30 pc. **7<sup>99</sup>**



**Ichiran TONKOTSU RAMEN**  
3 Servings, 13.6 oz. **19<sup>99</sup>**



**Jonetz TOKYO CURRY**  
Selected. 6.35 oz. **3<sup>29</sup>**



**Momoya TABERU RAYU**  
3.88 oz. **4<sup>49</sup>**



**Shimizu SABA**  
Selected. 5.29 oz. can. **2<sup>79</sup>**



**Maruchan BOWL NOODLE**  
Akai Kitsune Udon or Midori No Tanuki Soba. 3.32 - 3.49 oz. **2<sup>49</sup>**



**Calbee FRUGRA FRUIT GRANOLA**  
26.4 oz. **8<sup>99</sup>**



**Jonetz KAKINOTANE AND PEANUTS**  
6 pk/5.93 oz. **1<sup>99</sup>**



**UHA Mikakuto CORORO GUMMIES**  
Selected. 1.41 - 1.69 oz. **1<sup>59</sup>**



**Kraft MACARONI & CHEESE**  
Selected. 5.5 - 7.25 oz. **2<sup>33</sup>**



**Progresso PIT MASTER SOUP**  
Selected. 18 - 19 oz. **2<sup>55</sup>**



**Taco Bell Original TACO SEASONING MIX**  
1 oz. **79<sup>c</sup>**



**Bubba's ENGLISH MUFFINS**  
Selected. 12 oz./6 ct. **4<sup>59</sup>**



**Royal Kona COFFEE**  
Selected. • 10% Blend, 7 - 8 oz. • Pods, 12 ct. **9<sup>99</sup>**



**Diamond Bakery SODA CRACKERS**  
Family size. Selected. 30 oz. **8<sup>99</sup>**



**Pepperidge Farm GOLDFISH CRACKERS**  
Selected. 4 - 6.6 oz. **2<sup>88</sup>**



**Aquafina PURIFIED DRINKING WATER**  
16.9 oz./24 pk. **7<sup>99</sup>**



**Moist Diane PERFECT BEAUTY SHAMPOO or TREATMENT PUMP**  
Selected. 15.2 oz. **13<sup>99</sup>**



**FOLDING MATTRESS**  
• Twin. 31" x 75" x 3.75". **79<sup>99</sup>**  
• Full. 53" x 69" x 3.75". **129<sup>99</sup>**



**3-CUP MICOM RICE COOKER/WARMER**  
#NLBAC05. Special settings for white, brown, long grain, steel cut oatmeal & quinoa. Cooks 1/2 to 3-cups. Extended 24 hour keep warm function. **159<sup>99</sup>**



**IH RICE COOKER/WARMERS**  
Lowest price Zojirushi IH rice cooker! New flat top design. Popular menu settings for Jasmine, Quick Jasmine, GABA brown rice, & more.  
• #NWOAC10. 5.5 cups. **329<sup>99</sup>**  
• #NWOAC18. 10 cups. **349<sup>99</sup>**



**Corry's SLUG & SNAIL KILLER**  
Ready-to-use pellets. Great for protecting vegetable, fruit & ornamental gardens. 1.75 lb. **7<sup>99</sup>**



**Xtra LIQUID DETERGENT**  
America's #1 value brand! Selected. 136.4 - 139.2 oz. Selection may vary by store. **6<sup>99</sup>**